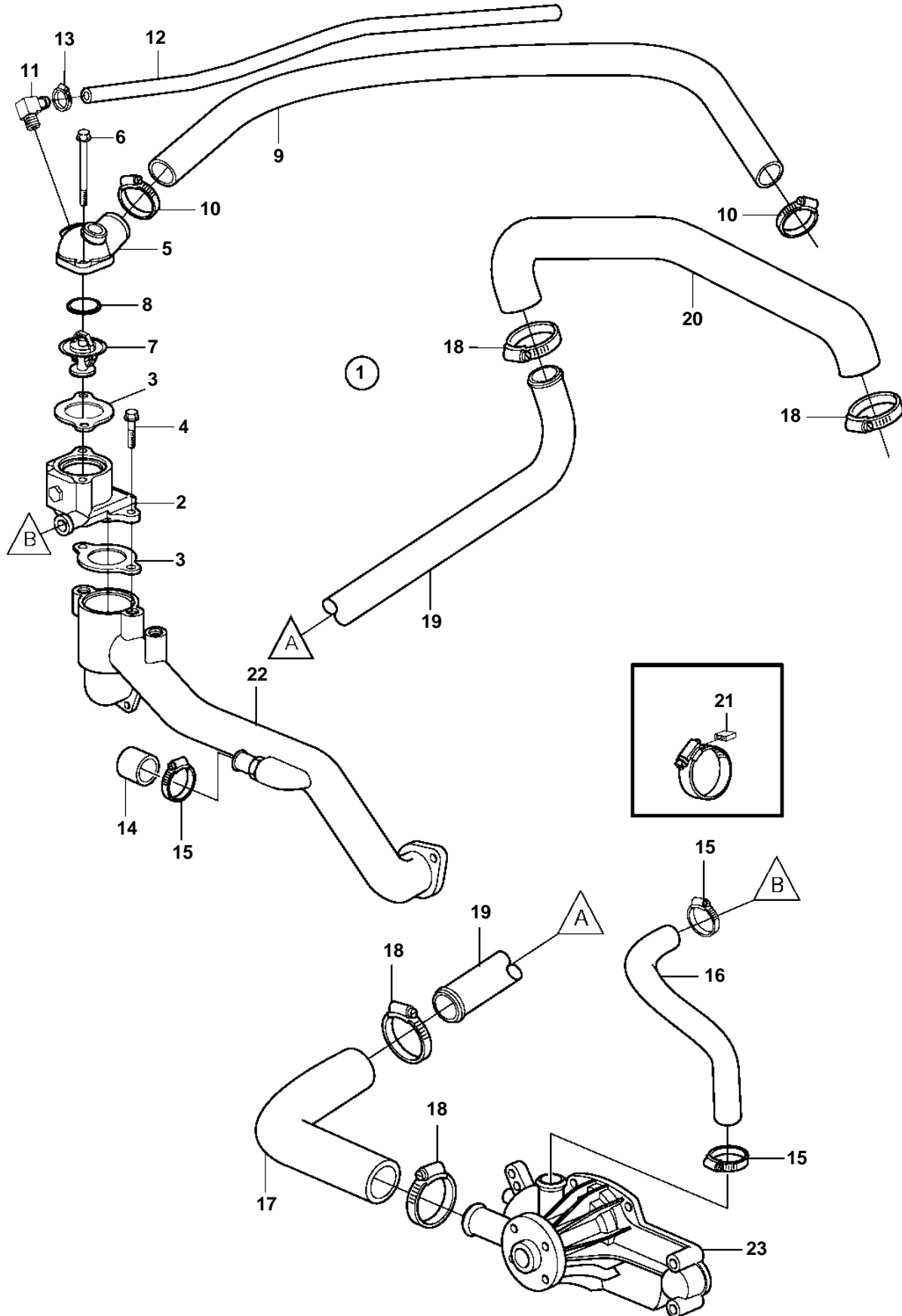


8.1GiI-A, 8.1GiI-B, 8.1GiI-C, 8.1GiI-D, 8.1GSiI-A, 8.1GXiI-A, 8.1GiI-B, 8.1GiI-C



8.1GiI-A, 8.1GiI-B, 8.1GiI-C, 8.1GiI-D, 8.1GSiI-A, 8.1GXiI-A, 8.1GiI-B, 8.1GiI-C

| REF | PART NO. | QTY | DESCRIPTION | NOTES |
|-----|----------|-----|-----------------------------|-------------------|
| 1 | | 1 | Freshwater cool kit | |
| 2 | 3851384 | 1 | • Thermostat housing | |
| 3 | 3852111 | 2 | • Gasket | |
| 4 | 3853401 | 1 | • Screw | |
| 5 | 3861410 | 1 | • Thermostat housing | |
| 6 | 965186 | 1 | • Flange screw | L=50mm |
| | 973096 | 1 | • Flange screw | L=130mm |
| 7 | 3831426 | 1 | • Thermostat kit | |
| 8 | 416033 | 1 | • • Sealing ring | |
| 9 | 3861402 | 1 | • Hose | |
| 10 | 3850422 | 2 | • Clamp | |
| 11 | 3860585 | 1 | • Fitting | |
| 12 | 3860957 | 1 | • Hose | |
| 13 | 3860413 | 2 | • Clamp | |
| 14 | 3852476 | 1 | • Cap | |
| 15 | 3853780 | 3 | • Clamp | |
| 16 | 3860953 | 1 | • Hose | |
| 17 | 3861433 | 1 | • Hose | |
| 18 | 3852098 | 4 | • Clamp | |
| 19 | 3861438 | 1 | • Water pipe | |
| 20 | 3861401 | 1 | • Hose | |
| 21 | 3858532 | X | Cover | W=0.465" (11.8mm) |
| | 3861999 | X | Cover | W=0.300" (7.6mm) |
| 22 | 3861341 | 1 | Circulation pump, crossover | |
| 23 | 3861308 | 1 | Pipe | |